



397 Mapodile Townships I Reg no: 2004/056667/23 I Simon Kgafela
Eestergeluk I VAT no: 4200244707 076 538 1630
1133 I Email: simon@kgagamelaholdings.co.za
WCA no: 05449150500 I www.kgagamelaholdings.co.za



397 Mapodile Townships

Eestergeluk

Steelpoort: 1133

PO Box 830

Steelpoort 1133

072 828 4205 | 076 538 1630

Fax No | 086 205 1460

www.kgagamelaholdings.co.za

Members: N Mahabe (Chairman) cell no I 072 828 4205
Email: admin@kgagamelaholdings.co.za
PO Box 830: Steelpoort 1133



INDEX

- **INDRODUCTION**
- **CONSTRUCTION**
- **TRANSPORT**
- **MINING**

Kgagamela Holdings

Home | Profile | Construction | Transport | Mining |

Kgagamela Holdings

Kgagamela Project is the superior provision of construction, transport and mining equipment and the provision of aftermarket support services to the mining and construction sectors.

COMPANY PROFILE

since 2004, our customers have come to know and trust the **Kgagamela Projects** Standard for Construction. Our core values of integrity, reliability and innovation are integral to delivering a superior customer experience. We provide economical and efficient solution to our client's challenges. We take ownership of the issues and understand our responsibility and commitment to our clients.

Kgagamela Projects is a full-service construction, logistics and mining management and general contracting firm that operate mainly in the Limpopo region. We are a vertically integrated organization, composed of a variety of business units organized around industry sectors. The business units are very diverse and each unit specializes in its own core industry. This structure allows each division to operate and develop expertise based on the demands of its specific industry. It also provides stability for the company as market forces vary within different market sectors.



Kgagamela Projects offers comprehensive, value-added services to create an environment that minimizes risk and maximizes returns for our customers - allowing projects to be delivered on time and on budget, with no surprises. Our collaborative project approach sets the standard for communication with our customers to provide client-driven solutions and satisfaction.

We pride ourselves on being very flexible and reacting quickly to customer needs as well as market demands. We are a service organization whose mission is to provide efficient solutions to our customers' challenges.

CONSTRUCTION

Kgagamela Projects was founded in 2004 by Norman Mahabe, a successful taxi company owner at the time, who found housing demand in the Tubatse region growing rapidly, especially for first-time homeowners. Over the years, the company has grown from power to power.

In the housing market, the company targets first-time homeowners and investors looking for a money-worthy investment. The company continues to build for the group's buyers while at the same time entering the affordable housing market. This is a clear contribution to alleviating the serious housing shortage of the low-income earners.

Recognising that there was a need to diversify, and with new industrial townships being proclaimed on the Greater Tubatse Municipality, the company ventured into commercial and industrial developments in 2004. The company has also undertaken projects for specific clients, which were tailored to their exacting requirements. Those retained as investment properties have been leased or are currently available for lease.

Each project is managed by our team of highly experienced personnel, incorporating the services of various professionals in the architectural, engineering, quantity surveying and other related fields, with whom we have established an excellent working relationship. Many of our subcontractors have now worked with us for a good number of years and have proved their reliability and dedication to quality workmanship.



We continually keep abreast with new developments in all fields of the construction industry, a factor that has resulted in considerable savings to our clients in both material costs and time

Top management believes in an open-door policy and our chairman is personally involved with each project. Such a “hands on” approach ensures that good relations are maintained between our clients and the company at all times.

We offer these services

1. New houses building
2. Renovations
3. Maintenance
4. Tiling
5. Painting
6. Carpentry
7. Landscaping
8. Carports
9. Paving
10. RDP housing



397 Mapodile Townships I Reg no: 2004/056667/23 I Simon Kgafela
Eestergeluk I VAT no: 4200244707 076 538 1630
1133 I Email: simon@kgagamelaholdings.co.za
WCA no: 05449150500 I www.kgagamelaholdings.co.za



Members: N Mahabe (Chairman) cell no I 072 828 4205
Email: admin@kgagamelaholdings.co.za
PO Box 830: Steelpoort 1133



397 Mapodile Townships I Reg no: 2004/056667/23 I Simon Kgafela
Eestergeluk I VAT no: 4200244707 076 538 1630
1133 I Email: simon@kgagamelaholdings.co.za
WCA no: 05449150500 I www.kgagamelaholdings.co.za



Safety & Health

Our key strategic objective is the achievement of "zero harm". Site Foremen and management ensure that safety is not compromised in any circumstances by taking responsibility for employee safety, leading by example, encouraging positive safety behaviour and discouraging negative behaviour. Site Foremen apply a policy of zero tolerance to non-compliance with safety standards. The company undergoes regular Safety Audits through the constant supply of quality safety wear, quality full

Members: N Mahabe (Chairman) cell no I 072 828 4205
Email: admin@kgagamelaholdings.co.za
PO Box 830: Steelpoort 1133



workshop material required for fixing machinery and safety officers constantly maintaining operations for full safety.

Occupational and non-occupational cases are referred to an external agency. There is no pre-employment HIV testing and all HIV testing and counselling is optional. HIV-positive employees are encouraged to participate in wellness programs offered by various local clinics.

TRANSPORT

Kgagamela Projects is a freight division specializing in liner logistics and employee transportation. With more than seven years of operation, the company has become one of the most popular freight and dispatch companies in the Limpopo region. Founded by Chairman Norman Mahabe, the **Kgagamela Projects** team has over 25 years of experience in the general transportation and taxi business.

Servicing mines and independent companies, **Kgagamela Projects** offers a wide and varied freight service and employee's transport. This included staff transport, building materials and general freight along with items such as chrome, sand, crushers and earthmoving spares.

Kgagamela Projects prides itself on honest, reliable and excellent customer service, treating each customer and freight haul with the highest level of personal attention, professionalism and confidentiality. All trucks include 24-hour satellite tracking equipment providing up to minute monitoring of consignment. Each and every haul is treated with the utmost care, arriving at destinations on time and in perfect condition.

A 24 hour – 7-day service, the company's fleet includes trucking and trailer equipment – kept in pristine condition, professionally cleaned and mechanically serviced weekly. All drivers, including Norman Mahabe, have an average 25 years on-road transport experience. All are licensed and qualified, fatigue managed, and fully insured for 'goods in custody' policy.



397 Mapodile Townships I Reg no: 2004/056667/23 I Simon Kgafela
Eestergeluk I VAT no: 4200244707 076 538 1630
1133 I Email: simon@kgagamelaholdings.co.za
WCA no: 05449150500 I www.kgagamelaholdings.co.za



Members: N Mahabe (Chairman) cell no I 072 828 4205
Email: admin@kgagamelaholdings.co.za
PO Box 830: Steelpoort 1133



397 Mapodile Townships I Reg no: 2004/056667/23 I Simon Kgafela
Eestergeluk I VAT no: 4200244707 076 538 1630
1133 I Email: simon@kgagamelaholdings.co.za
WCA no: 05449150500 I www.kgagamelaholdings.co.za



Members: N Mahabe (Chairman) cell no I 072 828 4205
Email: admin@kgagamelaholdings.co.za
PO Box 830: Steelpoort 1133



397 Mapodile Townships I Reg no: 2004/056667/23 I Simon Kgafela
 Eestergeluk I VAT no: 4200244707 076 538 1630
 1133 I Email: simon@kgagamelaholdings.co.za
 WCA no: 05449150500 I www.kgagamelaholdings.co.za



Our current and previous partnerships

- Energim
- Ngululu bulk carriers
- OCL
- LCS

Members: N Mahabe (Chairman) cell no I 072 828 4205
Email: admin@kgagamelaholdings.co.za
PO Box 830: Steelpoort 1133



RTMS

RTMS is an industry-led, government-supported, intentional, self-regulation plot that energizes consignees, consignors & street transport administrators to actualize a administration framework that illustrates compliance with Street Activity Directions and contributes to protecting street framework, progressing street security & expanding efficiency.

Our company is RTMS accredited which entails strict adjuration to road safety and compliances to government rules and regulations. Our company puts safety for individuals in our company and to the public as a top priority thus complying with strict RTMS regulations.

PBS

Performance Based Standards or PBS, is the foundation of an alternative regulatory system for heavy vehicles in South Africa. First launched in 2007, the PBS system uses a modified version of the Australian road-train regulations, where heavy vehicles are designed on how they perform against a set of safety standards, rather than how they look.

Kgagamela Project has invested into adopting PBS units within its fleet, meaning our company has a division of trucks which can load abnormal loads up to 52 tons whilst adhering to safety standards of the South African law. That on its own gives our company a competitive advantage against our competitors as we can lawfully load more tonnages than regular sized side tipper trucks.

About Our Company

Over the past 7 years **Kgagamela Projects** has developed an envied reputation as a quality provider of chrome, express road transport and distribution in Limpopo up to the harbour through a persistent focus on service. Its commitment to service is built on a culture of trust, responsibility and accountability.

Primary elements required in providing a consistent healthy delivery solution follow:

- **Strength:** 7-year history and financially strong



- **Information Technology:** Innovative and personalised.
- **Quality Culture:** Process and customer centric driven with transparent results.
- **Current:** Structure and technology.
- **Management Plan:** Expertise and experience.
- **Adaptable:** Customised customer solutions based on understanding.

As with all custom solutions offered, **Kgagamela Projects** proposes to combine the above attributes to provide the business with the highway transportation and distribution solutions they need. The focus will continue to be on all major areas, not just the current area.

The comprehensive performance goal of Kgagamela Projects is for all of its subsystems (processes, departments, teams, people, etc.) to work together in the best possible way to achieve the desired results of the business.

Key initiatives for **Kgagamela Projects** will include:

- Continuous improvement of service standards through promotion of compliance;
- Restructure of staff to support and improve overall growth and system compliance;
- Continued focus on training and support of staff with continuing emphasis on 'reporting'.

Kgagamela Projects focuses on continuous improvement while increasing effectiveness and efficiency in achieving policies and objectives. Not limited to quality initiatives. Improving business strategy, performance, and business relationships with customers, employees, and suppliers may be subject to continuous improvement. Simply put, it means "getting better and better."

The **Kgagamela Projects** Service is built on IT, security, speed and accountability. We have created our name by consistently tracking and tracking all shipments entrusted to us and delivering them intact and on time.

Our Commitment to Delivery



Kgagamela Projects is committed to your business to create a long-term service partnership that will deliver immediate IT and service benefits. Its continued commitment to mutual goals will help position your business with a significant competitive advantage.

You can be confident in **Kgagamela Projects** as a service solution they can trust and that it will always deliver on promise, from the start. Based on **Kgagamela Projects'** current and future relationships, it will meet your business' distribution, customer service and IT expectations

Kgagamela Projects hopes that you will take the opportunity to understand its service background through clients, employees and partners and be completely content in a strong partnership with a company embodying a compatible set of values. It advocates that the service partnership commences at the earliest opportunity with the continuation of existing intrastate express road transport and distribution requirements. Based on capabilities and shared information, this partnership would certainly present to you a real potential for significant short- and long-term service benefits.

Our Promise to You

- Innovative, forward thinking IT solutions, where satellite tracking is at the forefront of business for client benefit.
- To significantly reduce the effort and workload required by your business to manage their products once dispatched from distribution centres.
- To keep late, damaged and mislaid goods to a fraction of 1%, with nil being the ultimate goal.
- To build a working relationship that creates trust, goodwill and respect through a common desire to improve business.
- To consistently inspire a culture of technical excellence and innovation, by encouraging staff to make suggestions, decisions and to take action.
- A hands-on approach that not only delivers tangible benefits, but also offers on-going support for the solutions introduced.
- The design, implementation and maintenance of new ways of working that will support new situations, changes and challenges.



Kgagamela Projects plays a key role in business continuity and stability, maintains aggressive growth and manages all major support centres from Tubatse to the port to support premium customers. Our service level is to top your competitors through Altrak satellite tracking, on-time delivery, **Kgagamela Projects** standard service, and the additional benefits of daily trailer cleaning management to ensure the highest quality service. Helps to position the business.

Kgagamela Projects has laid the foundations to meet the requirements to meet the set performance standards, to establish a solid position with current employees and to support the growth of market share.

The selection of the right service partner is extremely critical to the future growth of your business and important that partners embody and embrace throughout their business identical attributes, ethos and principles of association, service, originality, communication, pride, confidence and professionalism.

Application Overview

Kgagamela Projects will provide your business with a landmark, yet highly realistic solution that offers genuine IT solution and service levels to current and prospective client's, in tandem satisfying both short-term and long-term needs of each business.

Your business can advise **Kgagamela Projects** its ability to fulfil the necessary commitments, covering all aspects of the operation will surpass expectation. This is primarily due to minimal loss and on time delivery, as well as **Kgagamela Projects** high destination service performance which will increase your business' reputation and credibility with valued clients.

Based on previous service providers, product quality and timeliness needed to be addressed. The introduction of **Kgagamela Projects** will decrease the use of other, more expensive transport modes and increase the functionality of IT, creating efficiencies and reducing cost.

Kgagamela Projects is in a premium position to partner your business. This is based on its current strategic focus; industry



experience, strong understanding and commitment of your business' expectation, application of own excellent service standards, capability, intellectual capital and financial stability.

Kgagamela Projects Business History and Outline

Kgagamela Projects commenced business in 2002 and is a 100% Black owned Express Distribution Company, effectively run by Director Norman who is frontline, hands-on executives.

It introduced an environment of satellite track technology throughout the entire line haul via 'Altrak' to ensure efficiency and reliability. At the time, the market had long needed a solution to catch up in tracking, and service accountability across regional mini taxis. **Kgagamela Projects** provides all necessary technology to ensure efficiency, effectiveness and transparency.

Client demands were also paramount in the decision to invest in tracking technology to enhance customer's niche position in the market place. **Kgagamela Projects** recognises the importance of Information Technology and lays a strong emphasis on use in the functioning of all departments for the benefit of our customers.

Embracing identified market needs, services could effectively be directed towards larger corporate clients who desire a true interaction with their service partner to achieve a smarter, more customer focused distribution network throughout South Africa. Niche markets committed to include:

- Minerals
- Employees Transport
- High Technology
- Telecommunications
- Photographic
- Medical
- Electronics
- Automotive
- Pharmaceuticals
- Engineering
- Clothing
- Beverages
- Building Products



- Earth and Automotive Parts
- Messenger
- Earth Moving

Planning and Change

Kgagamela Projects is a key service provider in these markets offering a wide range of satellite tracking, materials hauling, employees transport and distribution services. Several of its business partnerships have risen from 'word of mouth' and known reputation for customer service excellence. It maintains a focus on providing services to prestige corporate clients such as your business.

Growth has enabled **Kgagamela Projects** to provide efficient solutions for some large multi-national clients across South Africa. Our objective is to grow by attracting a manageable number of qualities, target market clients and providing them with focused attention, rather than forcing business to grow simply through the push for indiscriminate addition to revenue. The following Strategic Partnership Charter further reinforces our approach.

Kgagamela Projects Benefits

At the outset, we consider your customers to be just as vital as you do.

By delivering a consistently trustworthy service, not only are you, 'our client', at an advantage, but so are your clients. We are committed to reducing prolonged and unsettling customer complaints, by providing fuss-free, on time and safe delivery of produce.

The flow on effect of reduced down time with taking long irate phone calls, chasing missing or soiled produce, reordering, erratic stock control and customer issues, have a positive effect right across your company – from overall satisfaction and efficiencies within your department, to Operations, IT, Marketing, Sales and Customer Service.



The benefits of a delivery service you can rely on, makes the decision to move forward with Kgagamela Projects – great commercial sense.

Considerate towards your products

Kgagamela Projects appreciates the opportunity to visit your site for operational meetings. This assisted with understanding of current challenges of consistent, timely, economic and safe delivery of product to you.

Kgagamela Projects has invested highly in state of the art fully refrigerated trailers to ensure freight is meet to HACCP approved standards and not spoilt. Benefits include efficiency, effectiveness and productivity to enhance the name brand. As part **Kgagamela Projects** service, each movement can be tracked via satellite tracking providing your business with the ability to monitor ETA and temperature controls.

Kgagamela Projects sole activity and objective is the management of services and to reduce the risk that your business can be and has unnecessarily been exposed to.

As part of the **Kgagamela Projects** proposal, employees have been trained to ensure freight received is fully inspected, accountability for freight received is consistent (as per the manifest provided), and that freight is loaded in a timely and intelligent manner. During this process all discrepancies will be reported via email and or fax to your customer service team.

Kgagamela Projects is highly confident that a combination of training, supervision, incentives and accountability (our culture) with advanced systems (technology) will continue to deliver benefits to your business.

MINING

Our business is situated along the R37 Route, which is the main road that connects Burgersfort and Polokwane, on this area there is vast deposit of minerals; this comes with the shortage of black owned companies that can synergise with the mining houses.



Kgagamela Project is well placed to assist your company deliver at the core business and advances your BEE score.



Kgagamela Projects is offering these two services to the mining sector:

1. The service and maintenance of smelters and mine

Kgagamela Projects provides process and engineering services and specialized equipment to the Ferroalloy industry in South Africa. We design, construct, install and maintain ferroalloy plants that produce raw materials for the production of stainless steel and mild steel. Our portfolio includes high carbon and charged chromium ferrochrome, high and medium carbon ferromanganese, silicomanganese, ferrosilicon, and ferrovanadium plants for a variety of processes such as ore agglomeration, sintering, smelting, and product handling. It is included. We also design and supply equipment such as charging shafts, headers, electrode systems, furnace roofs, jackets, furnace liners, electrode contact shoes and pressure rings.

Applications of these processes range from ore agglutination and pre-treatment (sintering, etc.) to smelting and product handling. Depending on the application, **Kgagamela Projects** can offer a variety of technologies for these products. In particular:

- AC furnace technology CaC_2 , Si Metal, Fesi, FeMn, SiMn, FeCr and Pt
- Dc furnace technology for FeCr, TiO_2 and Pt
- Rectangular furnace technology on Pt, Cu, TiO_2 and Feni
- Slag cleaning
- Gas cleaning
- Energy recovery



397 Mapodile Townships I Reg no: 2004/056667/23 I Simon Kgafela
Eestergeluk I VAT no: 4200244707 076 538 1630
1133 I Email: simon@kgagamelaholdings.co.za
WCA no: 05449150500 I www.kgagamelaholdings.co.za

Kgagamela Projects also supplies key technical equipment to the furnaces either as part of the total plant or as a standalone unite.

Comprising:

- Complete electrode systems including pressure rings, contact shoes and slipping devices
- Furnace roofs
- Furnace shells and linings
- Bus tubes and flexible
- Furnace charging systems
- Tap hole cooling blocks
- Copper coolers

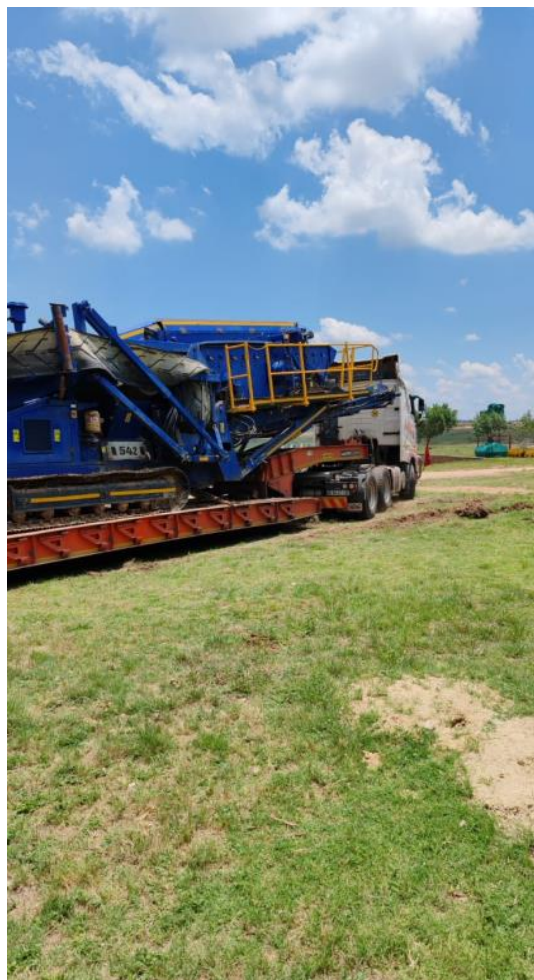
Screens



Members: N Mahabe (Chairman) cell no I 072 828 4205
Email: admin@kgagamelaholdings.co.za
PO Box 830: Steelpoort 1133



397 Mapodile Townships I Reg no: 2004/056667/23 I Simon Kgafela
Eestergeluk I VAT no: 4200244707 076 538 1630
1133 I Email: simon@kgagamelaholdings.co.za
WCA no: 05449150500 I www.kgagamelaholdings.co.za



Members: N Mahabe (Chairman) cell no I 072 828 4205
Email: admin@kgagamelaholdings.co.za
PO Box 830: Steelpoort 1133



2. The mining services

Kgagamela Project has a mining division which generally consists of working with accredited mining permit/rights holders to mine on their behalf.

We are offering the mining of chrome and platinum with these services:

- Mining services
- Vamping below with all the equipment
- Plant hire
- Installation and stripping of pipes in shafts or old work
- Repair work in shafts
- Paving of inclines and declines
- Building of dams
- Building of barricades for abandoned areas
- Building winch beds and winch barricades
- Installing rails and striping of rails included with grading
- Blasting ore passes
- Installing chutes
- Building grizzly's for tips with barricades
- Installation support
- Mining maintenance





397 Mapodile Townships I Reg no: 2004/056667/23 I Simon Kgafela
Eestergeluk I VAT no: 4200244707 076 538 1630
1133 I Email: simon@kgagamelaholdings.co.za
WCA no: 05449150500 I www.kgagamelaholdings.co.za



Our partnership

- Samancor TAS.
- Private mining permit/right holders.

Members: N Mahabe (Chairman) cell no I 072 828 4205
Email: admin@kgagamelaholdings.co.za
PO Box 830: Steelpoort 1133



397 Mapodile Townships I Reg no: 2004/056667/23 I Simon Kgafela
Eestergeluk I VAT no: 4200244707 076 538 1630
1133 I Email: simon@kgagamelaholdings.co.za
WCA no: 05449150500 I www.kgagamelaholdings.co.za

For more information please contact us on the details below

Name	Surname	Position	Email	Contact Details
Norman	Mahabe	Chairman	norman@kgagamelaholdings.co.za	072 828 4205
Simon	Kgafela	Marketing Manager	Simon@kgagamelaholdings.co.za	076 538 1630
Katlego Jack	Mahabe	Operations Manager	pm@kgagamelaholdings.co.za	079 716 8637
Nancy	Molapo	Officer Administrator	Admin@kgagamelaholdings.co.za	078 645 9391

Please visit us at:
www.kgagamelaholdings.co.za

Members: N Mahabe (Chairman) cell no I 072 828 4205
Email: admin@kgagamelaholdings.co.za
PO Box 830: Steelpoort 1133